

11D

ONEIDARCHITECTS.COM

ARISTOTELOUS 18

**FEASIBILITY PLANS &
REPORT FOR BUDGETING**

REPORT FOR BUDGETING

ARISTOTELOUS 18

GENERAL WORKS

- Demolition of existing staircases on all floors.
- Installment of new staircase in the existing big elevator shaft. This can lead to the terrace as well.
- Small elevator in the existing small elevator shaft.
- New aluminium windows on front and back facades according to plans. General refurbishment of facades.
- Covering of all peripheral walls from the interior with one-side drywalls comprising double drywall panels and stonewool insulation (needs confirmation).
- Cutting of concrete slabs in two places to create two lightwells starting from the top of the building, one ending at the second basement and one ending at the mezzanine.
- New floor finishes with microcement or tiles (needs confirmation).
- New drywalls comprising two sided double drywall panel and stonewool insulation, according to plans.
- New internal aluminium windows to lightwells.
- New security doors or aluminium doors for all apartments (needs confirmation).
- Safety-glass doors for entrances to common spaces.
- Aluminium or metal doors for auxiliary spaces.
- Fire-secure doors for stairs and elevator compartments on all floors.
- Shafts necessary beside bathrooms and common kitchens.
- New railings on each balcony and on terrace of building.
- Paintworks (interior - exterior)
- New floor on top terrace (industrial floor or tiles)
- Possibility of a pergola on top terrace (needs confirmation).
- Structures on terrace need extensive repairs.

DORMS

- Dorms for each person comprise: Desk and study chair, Single bed with bedside table, Built-in bookcase, Closet, Bathroom with shower, wasbasin, toilet and bathroom accessories.
- Due to legalisation processes, dorms may be built in the two basements as well (see plans).

COMMON SPACES

- Entrance to building with safety-cards (needs confirmation).
- New entrance lobby on ground floor with reception desk, pigeonholes area and small waiting area (needs confirmation).
- New common kitchens on each floor (about 3.5m made of melamine, with all necessary electrical appliances).
- Dining tables for 8 persons on each floor, sitting area with sofas on each floor.
- Laundry space in basement with common appliances.
- 2 common WC at least on one floor.

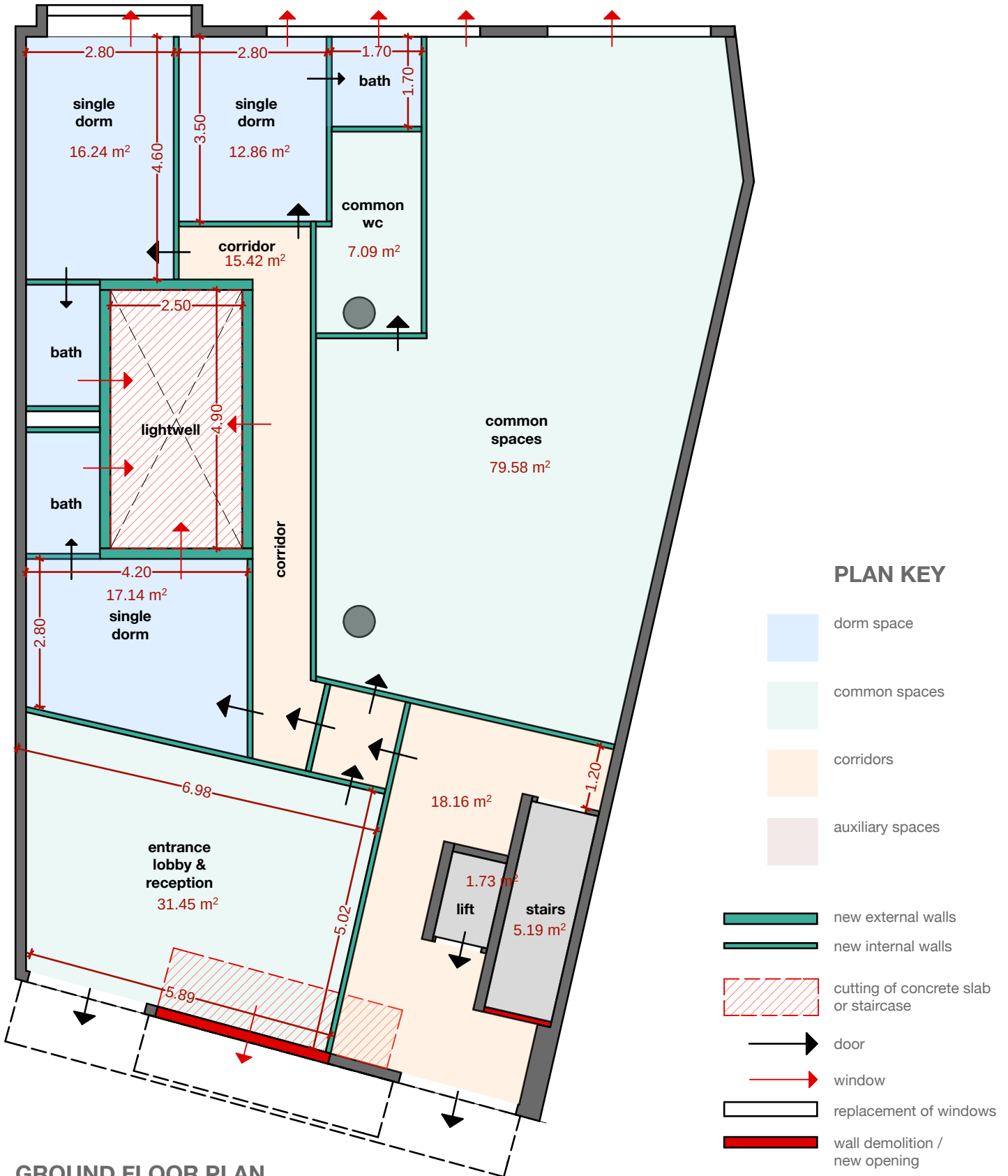
RECOMMENDATIONS

The use of the building will be residential (needs confirmation), as student dorms. However, The ministerial decision on Youth hostels (Gov 3510/ 29-12-2014, articles 3 to 5) can serve as a good guideline for recommendations.

PLANS

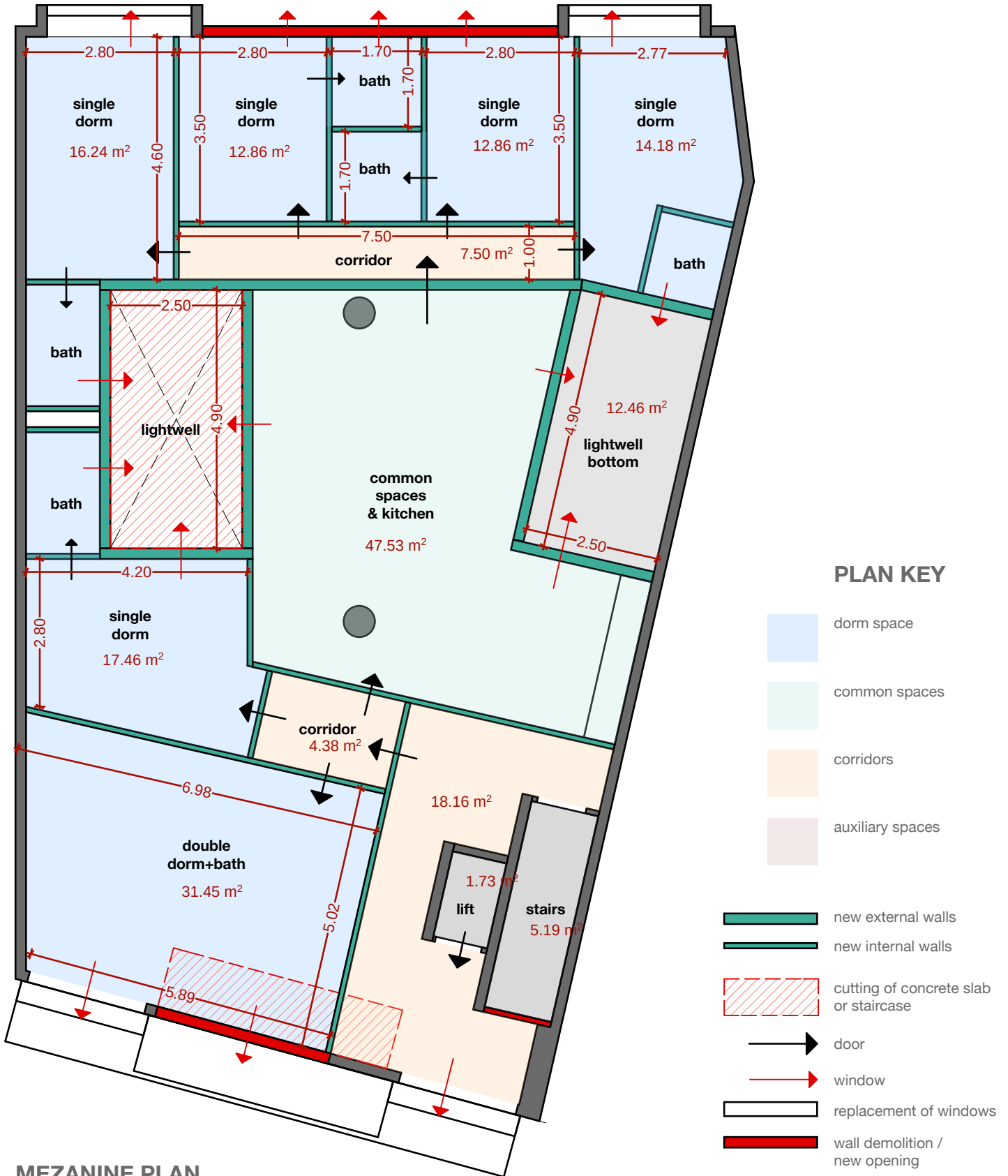
Please see attached Feasibility study plans.

Aristotelous 18 Feasibility study



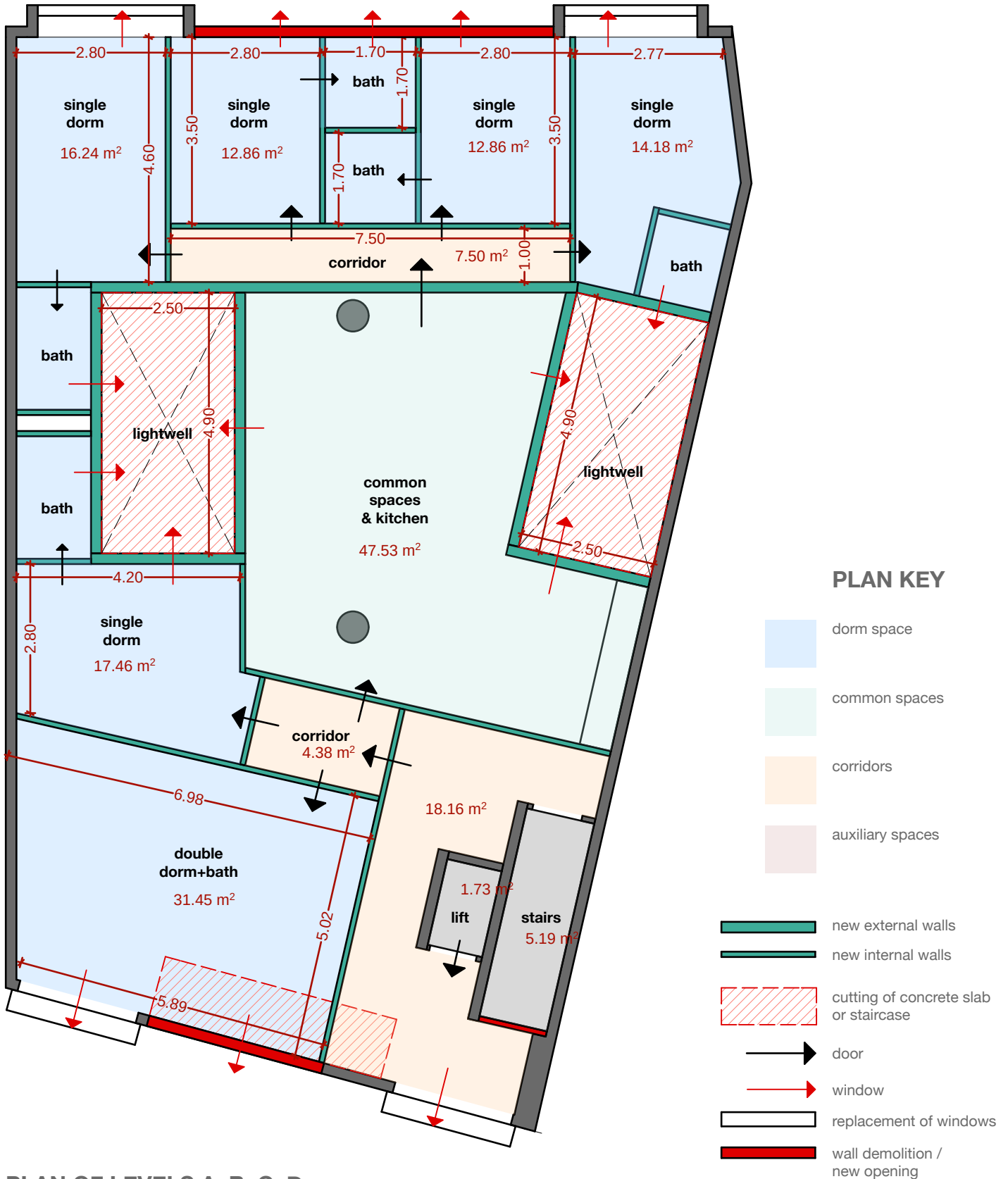
GROUND FLOOR PLAN
scale: 1/100

Aristotelous 18 Feasibility study



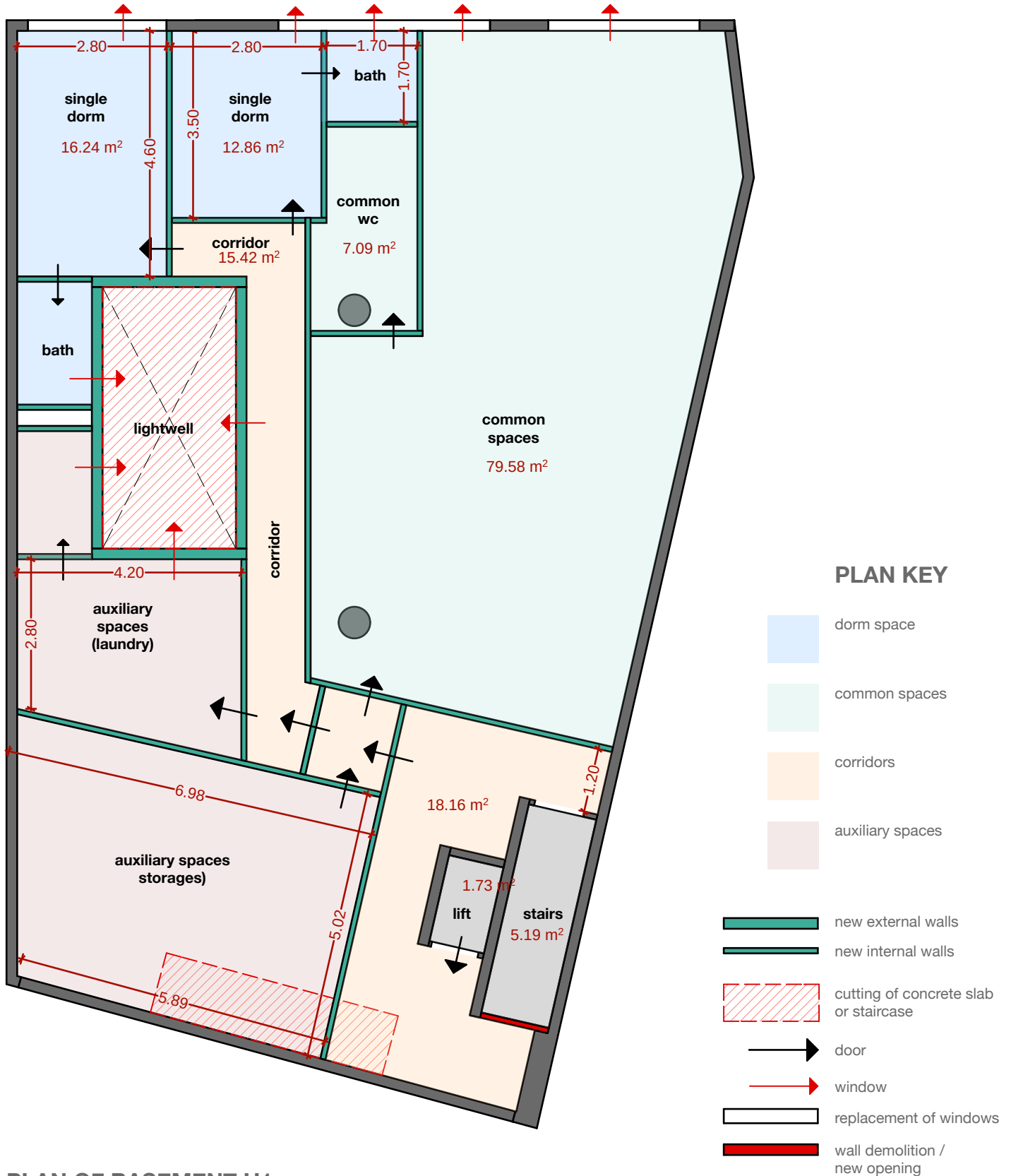
MEZANINE PLAN
scale: 1/100

Aristotelous 18 Feasibility study



PLAN OF LEVELS A, B, C, D
scale: 1/100

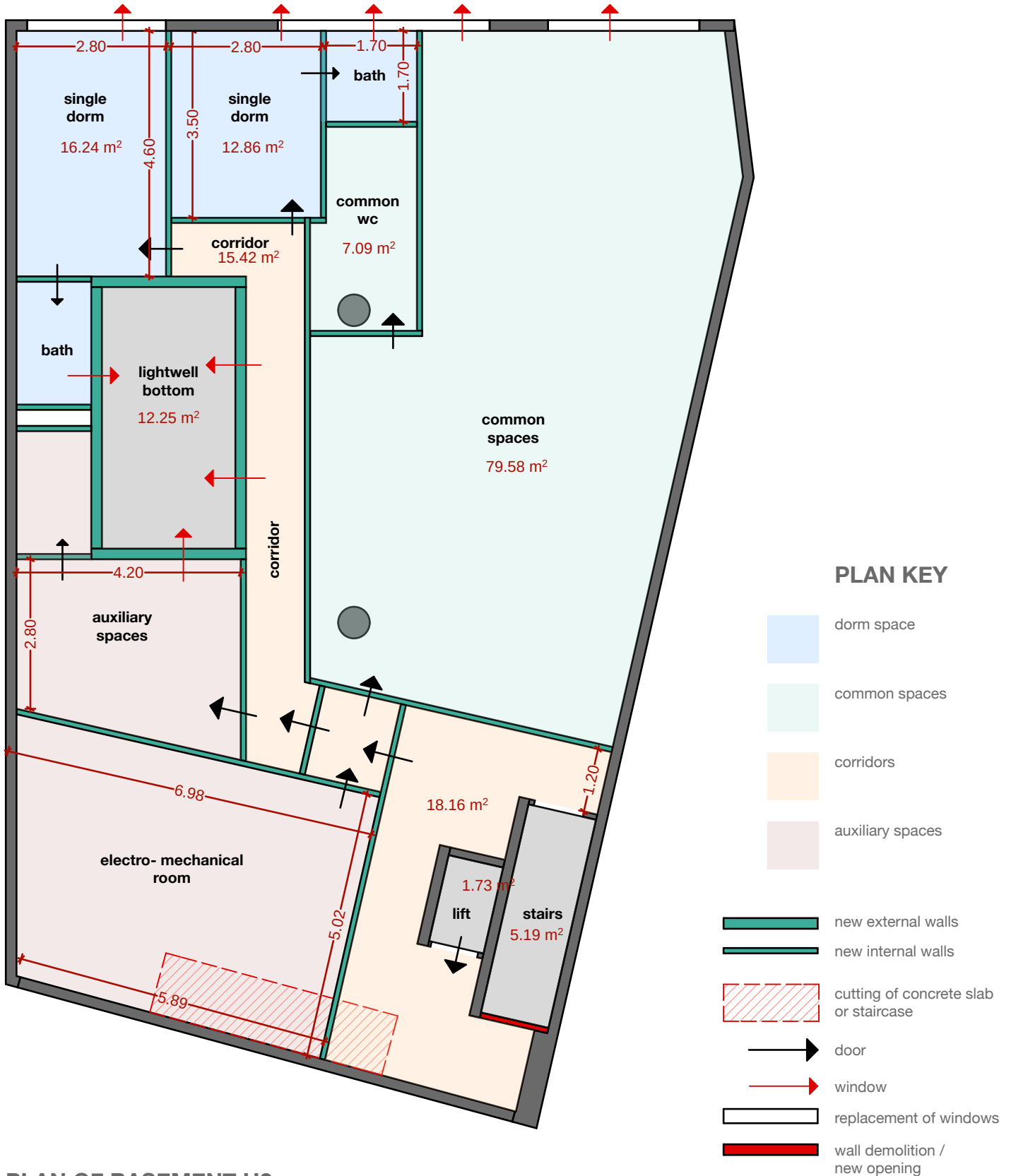
Aristotelous 18 Feasibility study



PLAN OF BASEMENT U1

scale: 1/100

Aristotelous 18 Feasibility study



PLAN OF BASEMENT U2
scale: 1/100